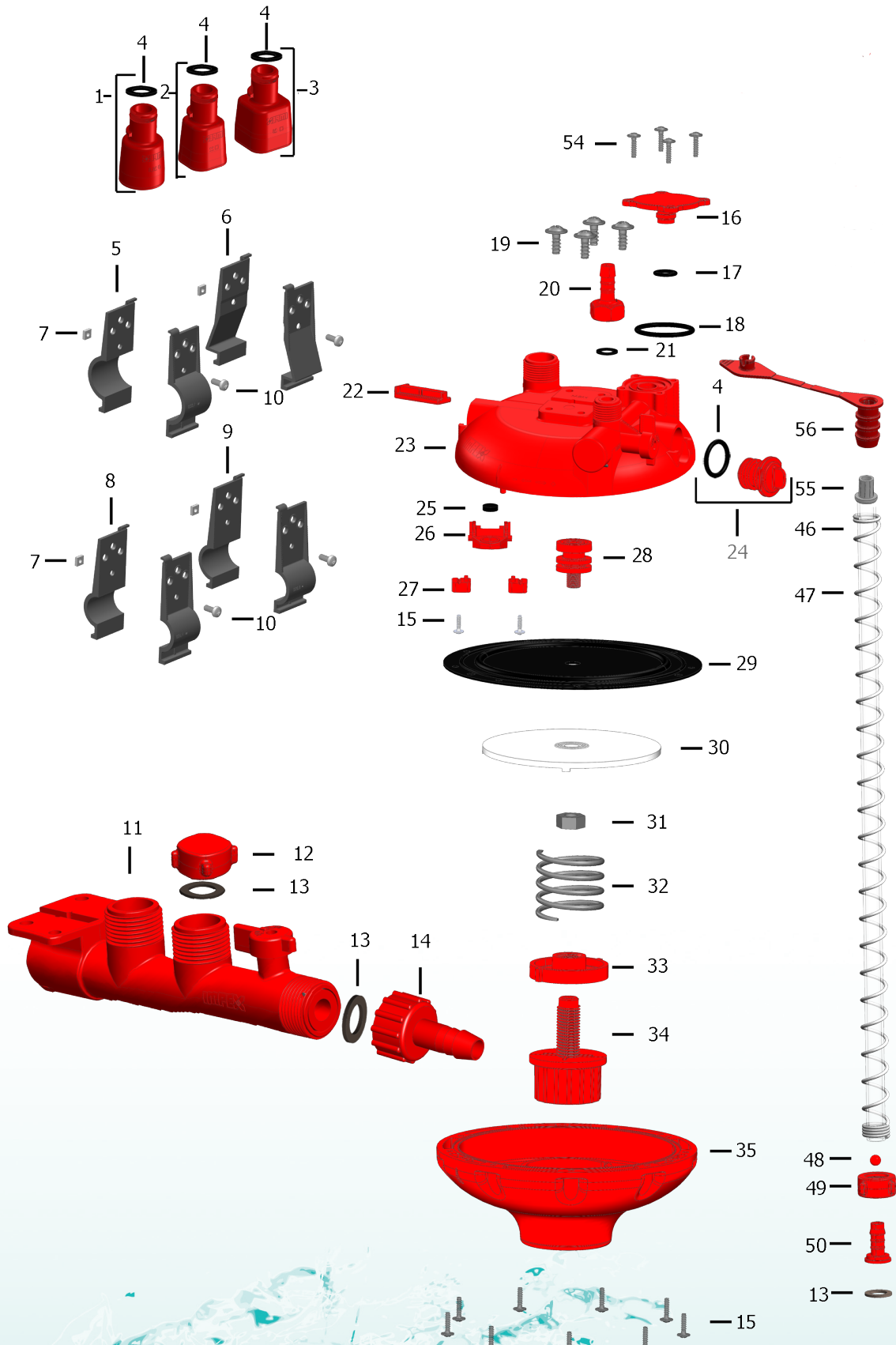


1



Water

Parts pressure reducer I-Flow

No. drawing	Article number	Description
1	12.01.10001	I-Flow reducer 26.7 mm Ø + O-ring
2	12.01.10002	I-Flow reducer 22 x 22 mm + O-ring
3	12.01.10003	I-Flow reducer 28 x 28 mm + O-ring
4	12.01.10004	I-Flow O-ring 16.9 x 2.7 mm
5	12.01.10005	I-Flow fastening clamp 33.7 mm Ø (2 required)
6	12.01.10006	I-Flow fastening clamp Alu-profile (2 required)
7	12.01.10007	Square nut M5
8	12.01.10008	I-Flow fastening clamp 25.4 mm Ø (2 required)
9	12.01.10009	I-Flow fastening clamp 26.7 mm Ø (2 required)
10	12.01.10010	Screw, raised head M5 x 12
11	12.01.10011	I-Flow end piece with valve
12	12.01.10012	I-Flow cap 3/4"
13	12.01.00013	I-Flow washer 3/4" 24x12x2
14	12.01.00014	I-Flow tube connector 3/4" female x 3/4"
15	12.01.10015	I-Flow screw bottom / lever
16	12.01.10016	I-Flow cover
17	12.01.10017	I-Flow O-ring 9.0 x 2.0 mm
18	12.01.10018	I-Flow O-ring 28.5 x 2.62 mm
19	12.01.10019	I-Flow mounting screw
20	12.01.10020	I-Flow tube connector 1/2"
21	12.01.00021	I-Flow washer 1/2" 11 x 18 x 1.5 mm
22	12.01.10022	I-Flow groove cover
23	12.01.10023	I-Flow top shell with valve
24	12.01.10024	I-Flow plug with o-ring
25	12.01.10025	I-Flow valve washer
26	12.01.10026	I-Flow lever
27	12.01.10027	I-Flow lever bracket
28	12.01.10028	I-Flow lever operator
29	12.01.10029	I-Flow diaphragm
30	12.01.10030	I-Flow backing plate
31	12.01.10031	I-Flow nut G 1/8 inch
32	12.01.10032	I-Flow pressure spring
33	12.01.10033	I-Flow adjustment nut
34	12.01.10034	I-Flow adjustment knob
35	12.01.10035	I-Flow bottom shell
46	12.01.10046	I-Flow breather tube 60 cm
47	12.01.10047	I-Flow breather pressure spring
48	12.01.10048	I-Flow ball
49	12.01.10049	I-Flow union 3/4"
50	12.01.10050	I-Flow tulle
54	12.01.10054	I-Flow screw cover/shell
55	12.01.10055	I-Flow sealing air outlet tube
56	12.01.10056	I-Flow plug air outlet tube