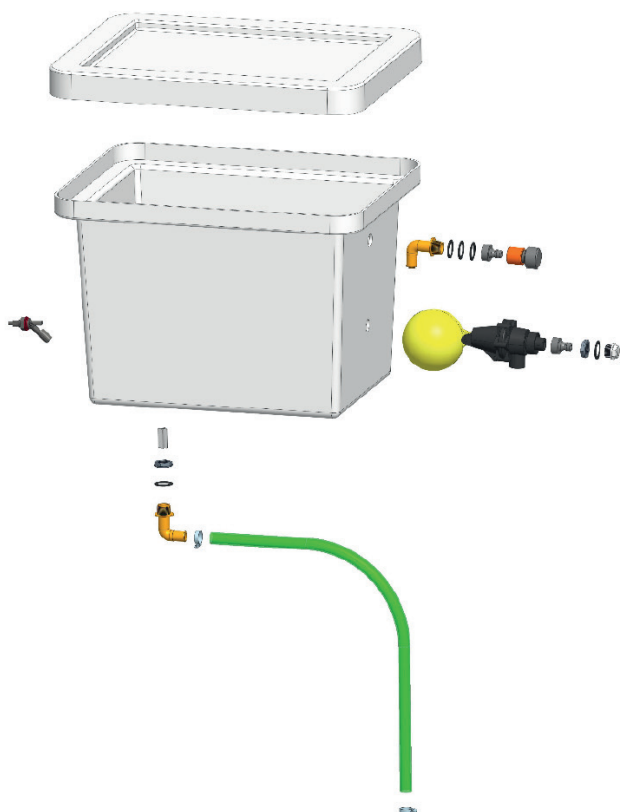


## Tank module

Item 7291

Exploded view tank module art. 7291



For the mounting of the tank module either the floor stand art. 7291-1 or the wall bracket art. 7291-2 is used to position the tank above the pump unit. The water level H (see illustration next page) has to be **at least 0,5m** above the suction connection of the pump. For avoiding a vortex, put the crosspiece into the drain of the water tank.

Illustration floor stand art. 7291-1

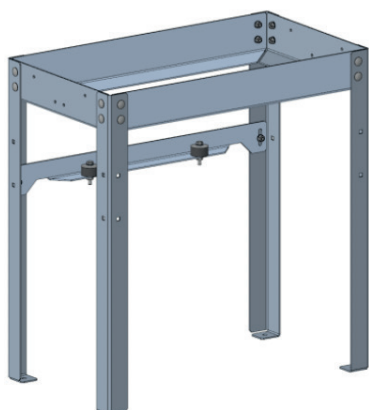
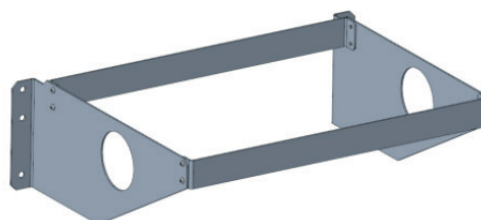


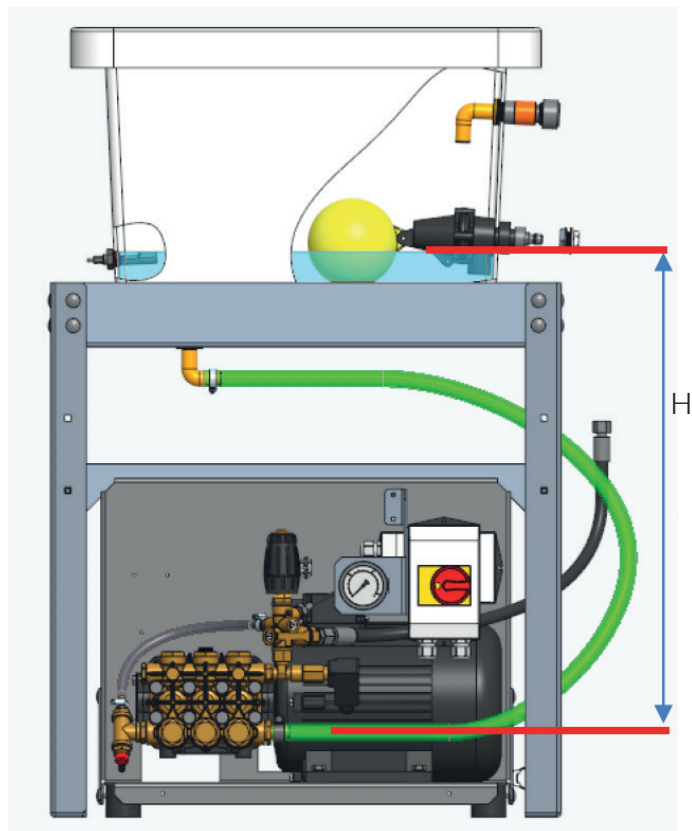
Illustration wall bracket art. 7291-2



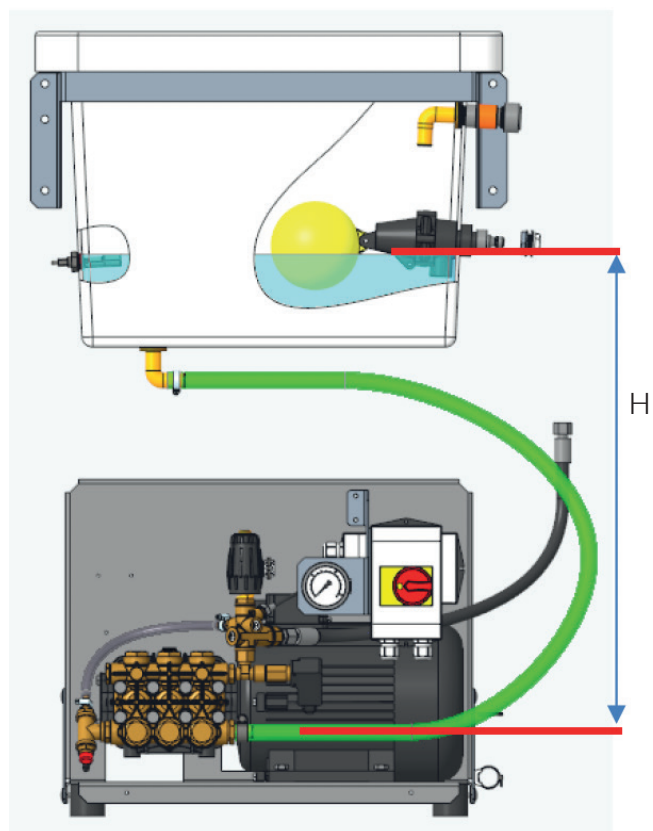
### Note

Use adequate mounting material!

Version 1: Tank on floor stand



Version 2: Tank in wall bracket



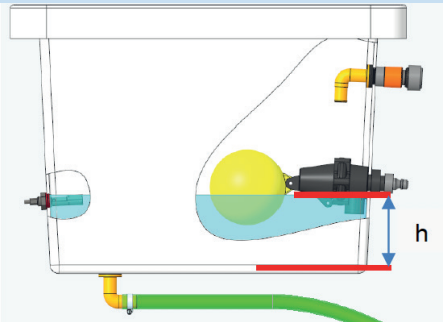
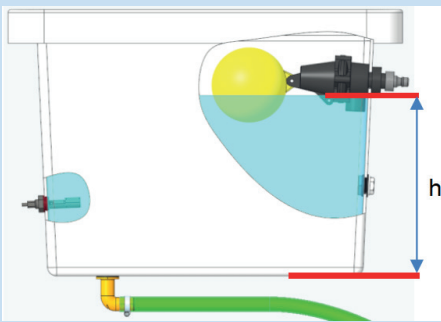
$$H \geq 0,5m$$

The hose from the tank to the pump should be laid as directly as possible, with a continuous slope. The float switch can be mounted in the tank from outside. The cable can be connected to the LUBING Touch Controller (see corresponding circuit diagrams). The tank monitoring must be activated in the Touch Controller. The float valve can be assembled in two different positions. Depending on the position and the setting of the float valve, different water levels can be adjusted (see following figures).

Adjustment float valve:

Position 1	Position 2	Position 3	Position 4	Position 5

Water level and volume:

	Float valve mounted at bottom	Float valve mounted at top
Adjustment		
Position 1	Not allowed (Water level too low)	$h = 27\text{cm}$ $V = 54\text{ l}$
Position 2	$h = 12,5\text{cm}$ $V = 24,5\text{ l}$	$h = 29,5\text{cm}$ $V = 60\text{ l}$
Position 3	$h = 16\text{cm}$ $V = 31,5\text{ l}$	$h = 33\text{cm}$ $V = 67\text{ l}$
Position 4	$h = 20\text{cm}$ $V = 40\text{ l}$	Not allowed (Float valve collides with cover)
Position 5	$h = 23\text{cm}$ $V = 46\text{ l}$	Not allowed (Float valve collides with cover)

The water tank must only be filled with filtered water. LUBING recommends to use 1 micron filter (e.g. filter unit art. 7126). The tank has to be kept closed with the cover during operation. This avoids problems with dirt clogging the nozzles. If additives should be nebulized, they can be mixed into the full tank. Attention: Observe the instructions in the manual for the Top-Climate-System (chapter "Disinfection/Medication").

